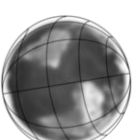
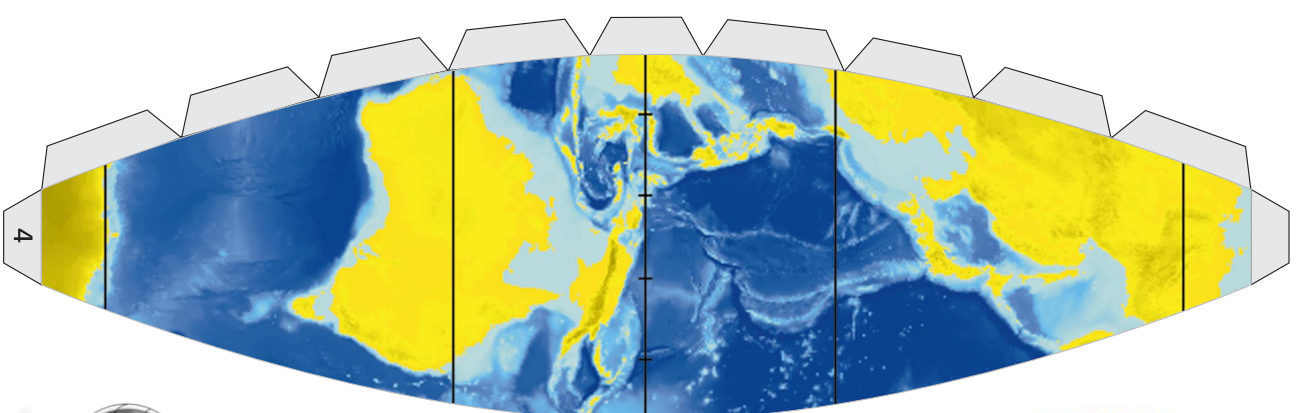
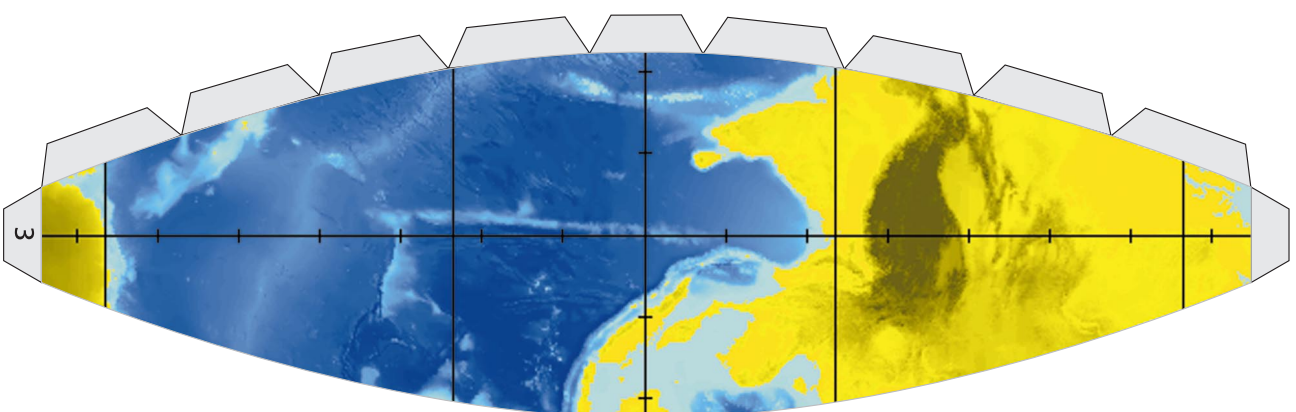
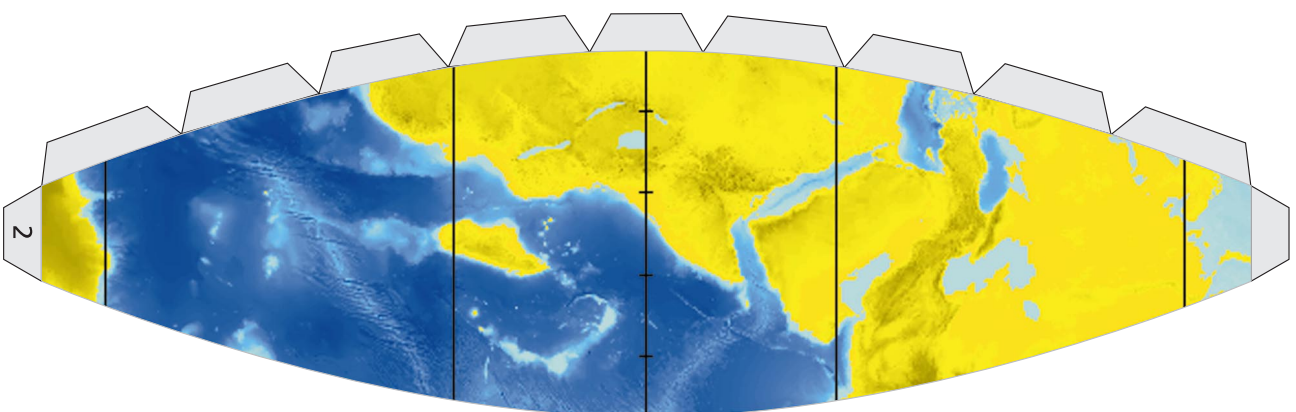
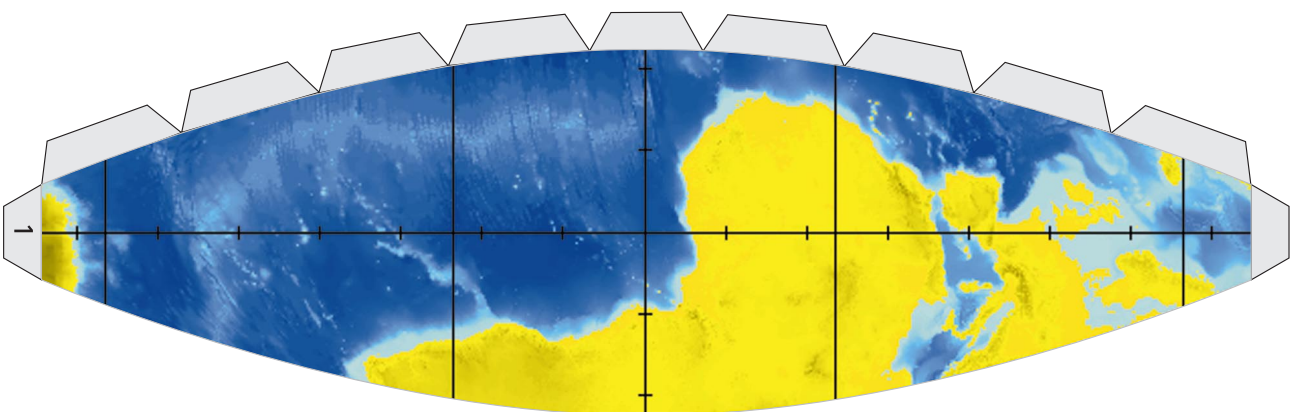


Calote
(Polo Norte)

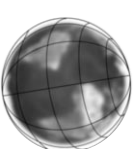


Latitude
Longitude



Pedido de registro de marca nº 336020

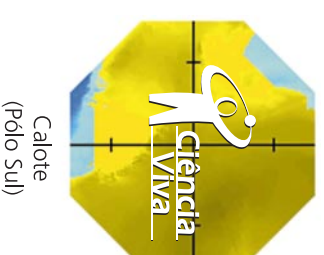
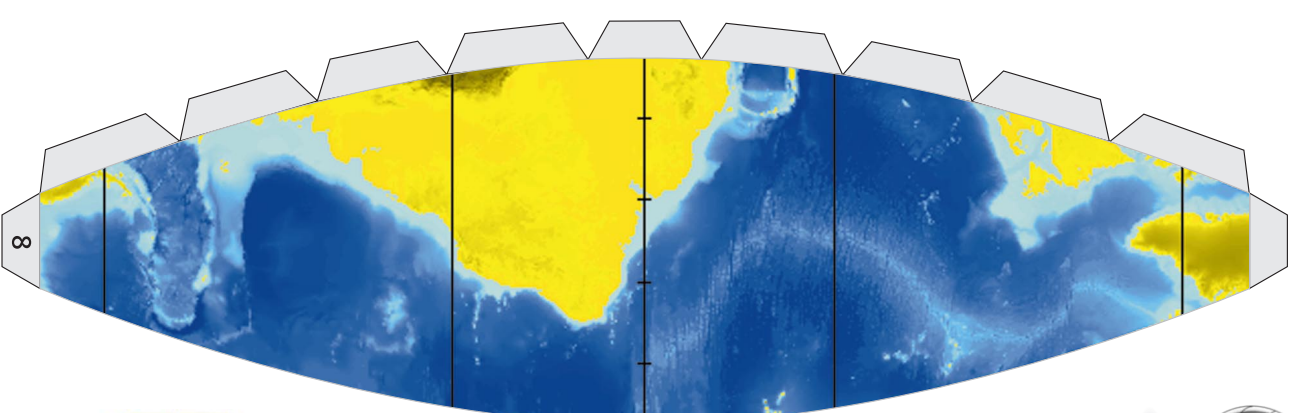
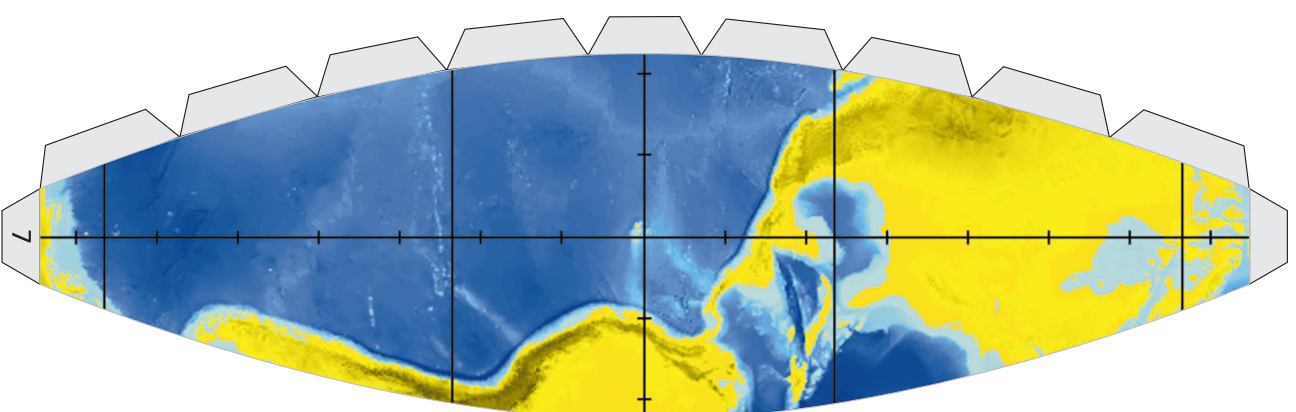
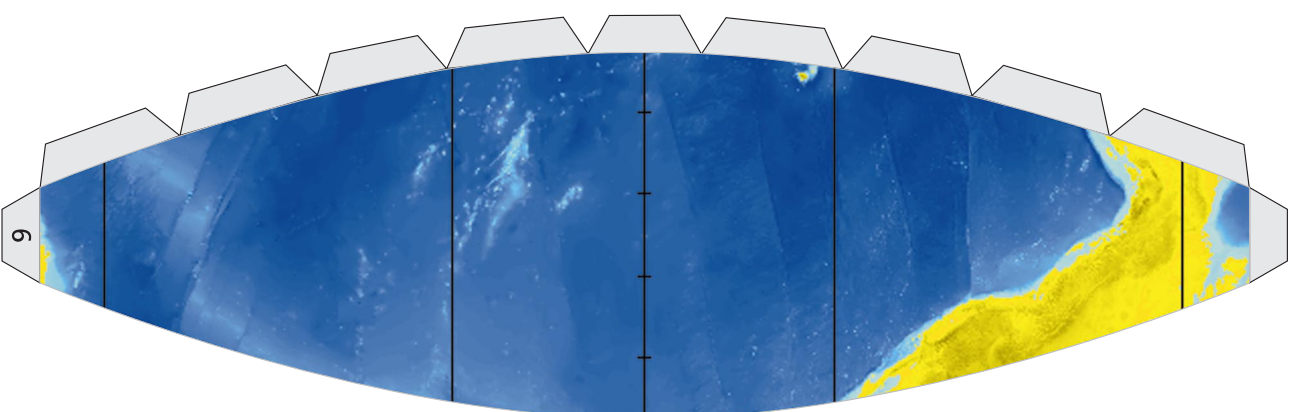
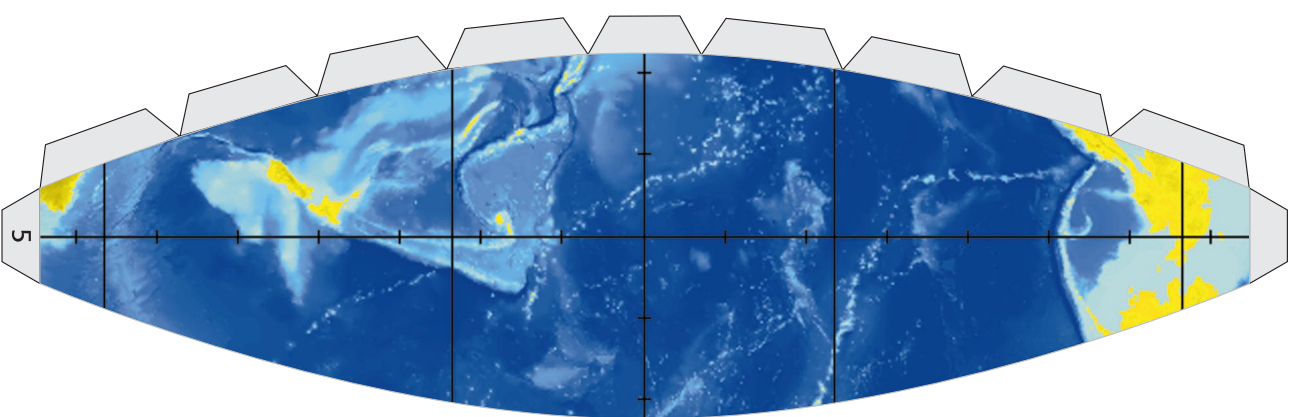
1 Deve ser utilizada uma cola de secagem rápida. Sobretudo, não utilizar a vulgar cola branca de papel. Ao colar os sectores do globo, os desenhos adjacentes devem-se ajustar perfeitamente. Isto consegue-se curvando as cartolinas. As duas calotes devem ser coladas no fim.



Latitude
Longitude



Pedido de registro de marca nº 336020



Calote
(Polo Sul)

i Deve ser utilizada uma cola de secagem rápida. Sobretudo, não utilizar a vulgar cola branca de papel. Ao colar os sectores do globo, os desenhos adjacentes devem-se ajustar perfeitamente. Isto consegue-se curvando as cartolinas. As duas calotes devem ser coladas no fim.